



Portland Street | Leamington Spa | CV32 5EY

£1,550 Per month



KINGSWAY
— ESTATE AGENTS —

Key features

- Prime Location In Leamington Spa Town Centre
- Two Double Bedrooms
- Fully Furnished
- EPC Rating: D

Description

Charming Two-Bedroom Apartment in the Heart of Leamington Spa

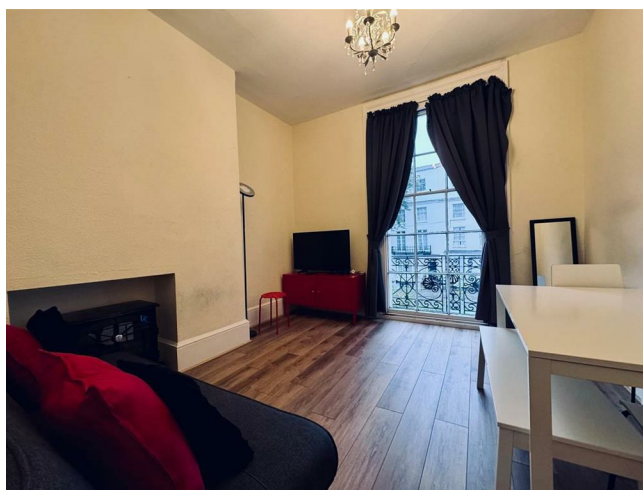
Kingsway Estate Agents are delighted to present this exceptional opportunity to rent a well-appointed two-bedroom apartment in the highly sought-after Leamington Spa Town Centre.

This beautifully located property features a spacious living room, a well-equipped kitchen, a modern main bathroom, and two generous double bedrooms.

Nestled on the picturesque, tree-lined Portland Street, this apartment benefits from the charm of impressive Georgian architecture while being just moments from the vibrant town centre. With the train station just a short 10-minute walk away and easy motorway access, this property in Leamington Spa offers a wealth of shops, cultural attractions, and a strong community atmosphere. ideal for commuters.

This is a must-see property, and early viewing is highly recommended to avoid disappointment!

EPC Rating: D



Living Room

13'5" x 11'6"

Kitchen

12'9" x 4'1"

Bedroom One

11'8" x 7'3"

Bedroom Two

13'5" x 6'5"





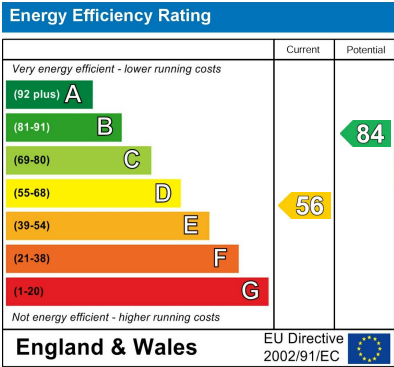
Floor plans



Total Floor Area Approx. 42 sq. metres
(452.14 sq. feet)



The floor Plan is for illustration purposes only
and may not be a representative of the
property and is not to scale



01926 760024

info@kingswayestateagents.co.uk
kingswayestateagents.co.uk